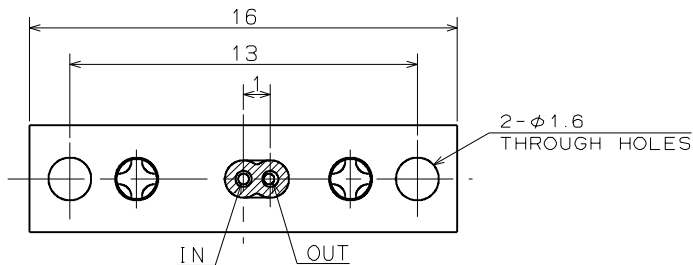
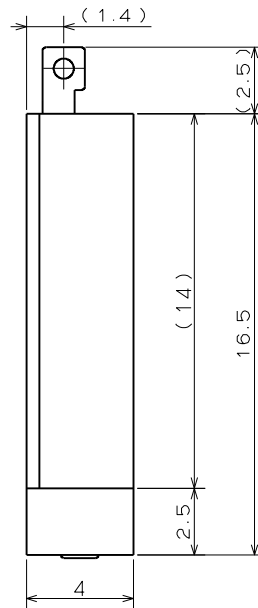
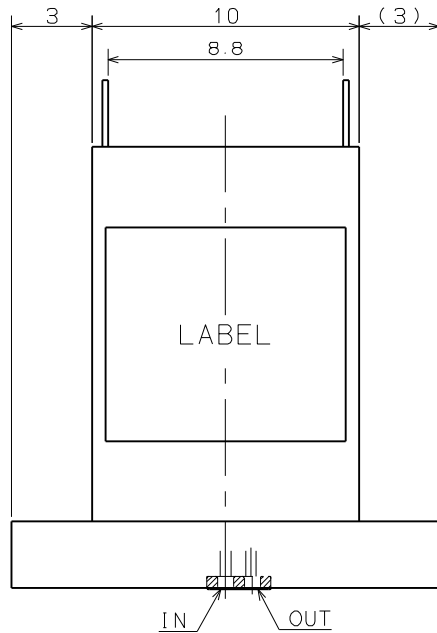


FOR REFERENCE ONLY



# VALVE

## SPECIFICATIONS FOR MODEL SMV-2-AMFF

- ORIFICE DIAMETER : 0.4mm
- OPERATING PRESSURE RANGE : IN 0 ~ 80kPa (0 ~ 0.8bar)
- OUT 0 ~ 30kPa (0 ~ 0.3bar)
- FLUID MEDIA : FLUIDS CHEMICALLY COMPATIBLE WITH MATERIALS BELOW
- MEDIA TEMPERATURE RANGE : 5 ~ 40°C
- AMBIENT TEMPERATURE RANGE : 5 ~ 40°C
- CURRENT : 250mA
- POWER CONSUMPTION : 0.2W
- MAXIMUM OPERATION ADJUSTABLE RANGE : 0.5Hz (IN A NORMAL TEMPERATURE ENVIRONMENT)
- NOTE : THE ABOVE SPECIFICATIONS WERE MEASURED UNDER NORMAL TEMPERATURES

### WETTED MATERIALS

△							
△			3	GASKET	FPM	1	
△			2	VALVE BODY	PEEK/PPS	1	
△			1	DIAPHRAGM	FPM	1	
SYM.	DATE	DESCRIPTION	PART NO.	PART NAME	MATERIAL	REQD.	NOTE
SCALE	APPROVED	CHECKED	DRAWN	VALVE		DRAWING NO	
5/1				SMV-2-AMFF		08112-00-S	
A 3							