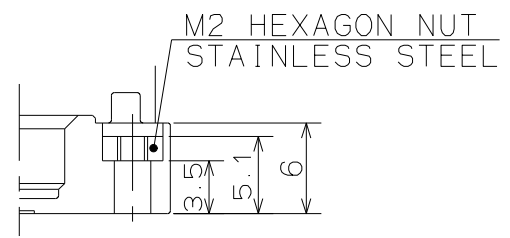
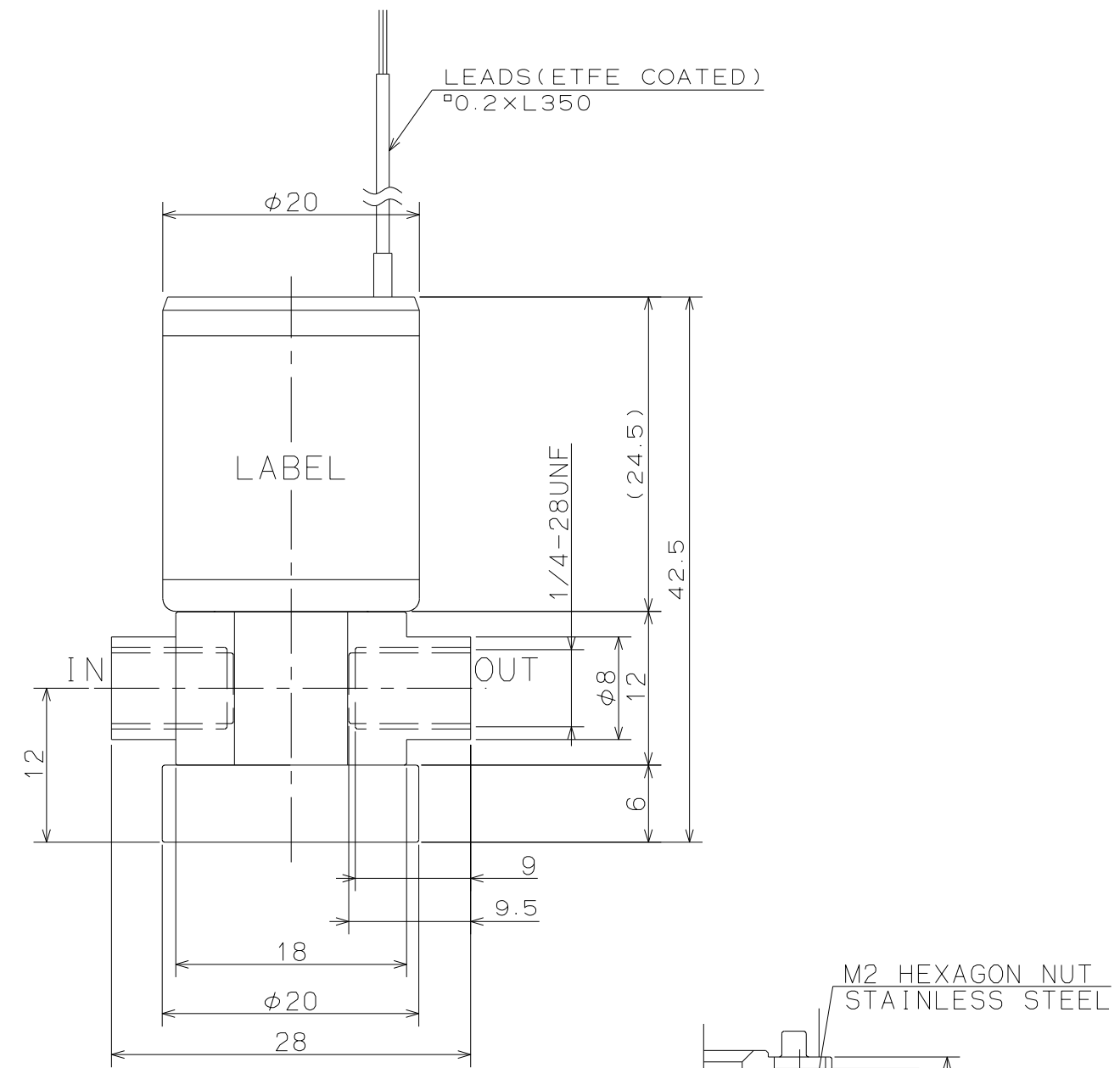


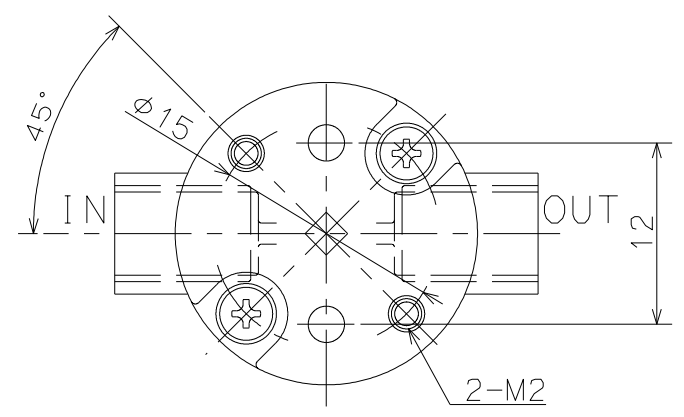
FOR REFERENCE ONLY

SOLENOID VALVE

SPECIFICATIONS FOR MODEL STV-2-1/4UK(R)G(F)-9



MOUNTING HOLE DETAILS



- ORIFICE DIAMETER : 1.2mm
 - PORT CONNECTION : 1/4-28UNF
 - OPERATING PRESSURE RANGE : IN -50 ~ 200kPa
{-375mmHg ~ 2bar}
 - OUT 0 ~ 50kPa
{0 ~ 0.5bar}
 - FLUID MEDIA : FLUIDS CHEMICALLY COMPATIBLE WITH MATERIALS BELOW
 - MEDIA TEMPERATURE RANGE : 5 ~ 50°C
 - AMBIENT TEMPERATURE RANGE : 5 ~ 50°C
 - RATED VOLTAGE : 5VDC, 12VDC, 24VDC
 - POWER CONSUMPTION : 2.5W
 - DUTY CYCLE : CONTINUOUS
 - COIL TEMPERATURE INCREASE : MAX. 80°C FROM ROOM TEMPERATURE
 - INSULATION CLASS : CLASS B
 - DIELECTRIC STRENGTH : 1500VAC FOR 60s
- NOTE

MODEL NUMBER	BODY MATERIAL	SOFT SEAL MATERIAL
STV-2-1/4UKG-9	PEEK	DAIEL PERFLUOR
STV-2-1/4UKF-9	PEEK	FPM
STV-2-1/4URG-9	PPS	DAIEL PERFLUOR
STV-2-1/4URF-9	PPS	FPM

WETTED MATERIALS

△								
△			3	DIAPHRAGM	PTFE	1		
△			2	SOFT SEAL	DAIEL PERFLUOR/FPM	1		
SYM.	DATE	DESCRIPTION	1	VALVE BODY	PEEK/PPS	1		
REVISION			PART NO.	PART NAME	MATERIAL	REQD.	NOTE	
SCALE	APPROVED	CHECKED	DRAWN	SOLENOID VALVE			DRAWING NO	
2/1				STV-2-1/4UK(R)G(F)-9			06192-00-S	
A 3								